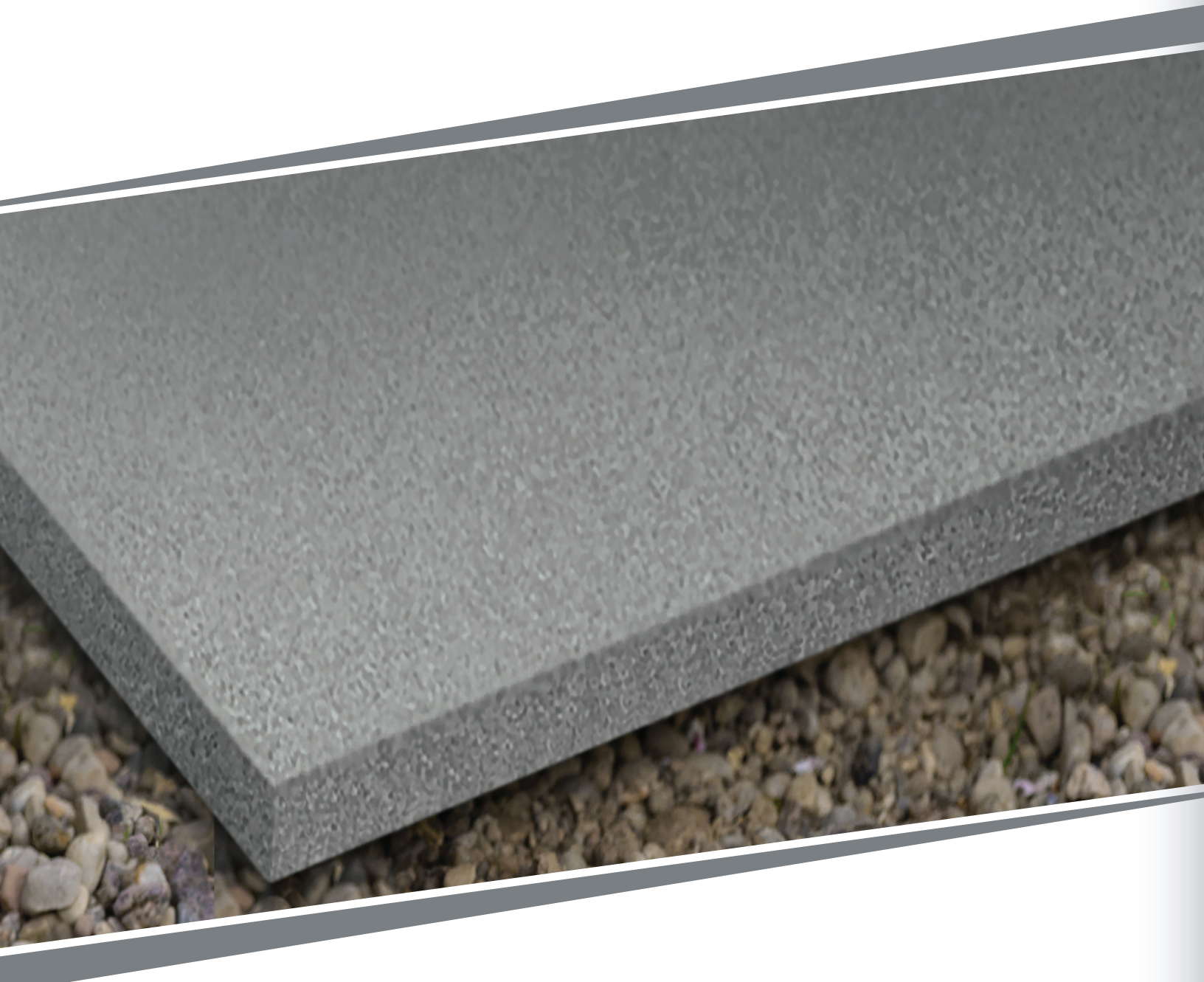


PROBOARD[®] CORE[™]
PREMIUM GPS 

Multi-Use
Rigid Insulation



Proboard® Core™, higher performance and better overall value than the competition.

Proboard Core is the premium, professional-grade continuous insulation delivering higher, long-term R-value performance and a better overall value compared to other materials.

Proboard Core can remain exposed in all installations, meet code requirements for continuous insulation and can be used in a variety of applications for both new construction and remodeling.

Multi-use applications

Proboard Core can be used in both residential and light commercial exterior applications.



Exterior Wall and Roof



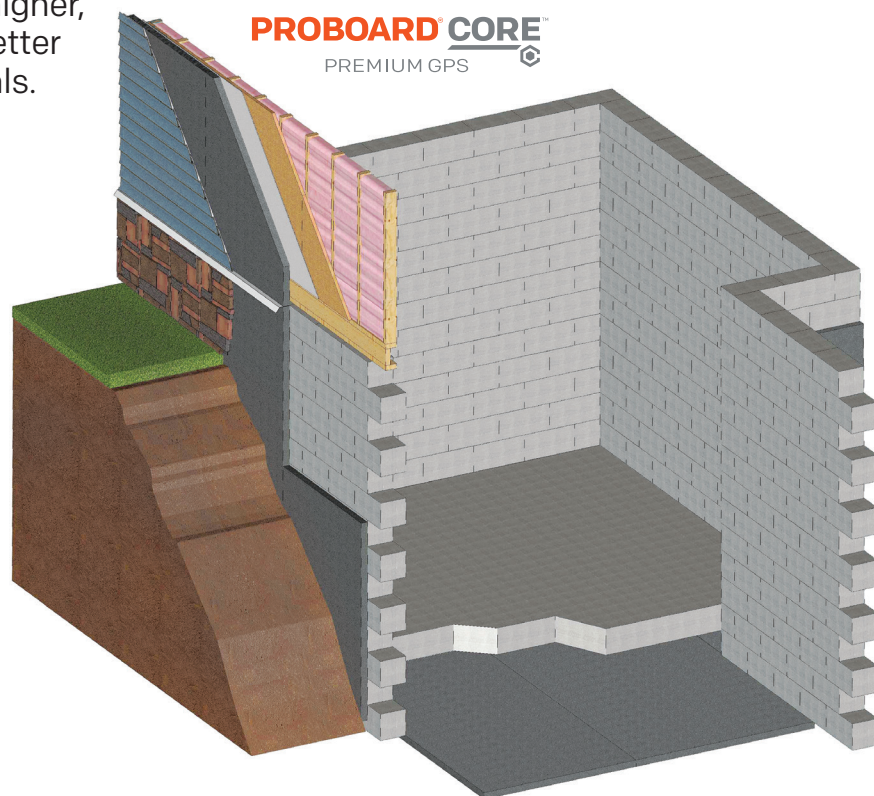
Perimeter Foundation



Under Slab



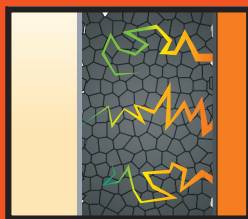
Foundation Face with frost blanket



Tap the Power of High-Performance Graphite Polystyrene

Proboard Core is formulated with Graphite Polystyrene (GPS) and delivers powerful benefits.

- R-5 Performance: GPS fuses the insulating power of air with millions of graphite particles. This unique cellular structure reflects radiant heat energy hundreds of times as it moves through the insulation to slow heat transfer and increase R-value
- R-Hold™ Technology, does not lose R-value over time like other foam



- Zero thermal drift – performs consistently in varying temperature conditions.
- Ultra-low moisture absorption – does not retain moisture like other foam
- High drying capacity – results in maintained R-value.
- Does not off-gas or breakdown over time
- Manufactured with a flame retardant
- Protected from insect degradation with safe insect inhibitor
- GPS is 100% recyclable and ozone-layer friendly – no CFC's or HCFC's are used


Select Proboard Core™ and get the most valuable benefits for less.

Proboard Core delivers maximum efficiency, cost-effectiveness and sustainability for numerous new construction applications.



Proven Energy Efficiency

More architects, contractors and builders are constructing homes with greater energy efficiency—while always having an eye on cost control and long-term performance.

- R-Value Performance:
 - Proboard Core provides R-5 per nominal inch performance at a cost advantage versus other options
 - Holds its R-Value: After extreme environmental testing by a respected independent laboratory, it held its R-value in conditions that involved both constant thermal gradient and cycling between large temperature and humidity variations 
- Adaptable to all climate zones, Proboard Core powers up when it gets cold outside. Insulating external walls with GPS provides continuous insulation which helps create a more comfortable indoor climate

Moisture Management

Proboard Core provides exceptional breathability and vapor semi-permeability.



- Reduces the risk of mold, rot, and structural damage tied to moisture condensation and long-term water retention
- Low moisture retention of less than 1% and vapor semi-permeable performance provide invaluable peace-of-mind to builders and homeowners alike
- Third-party environmental testing (ASTM C1512) concluded GPS-based insulation does not retain moisture and dries quickly after cycling from low to high humidity

Stability and Durability

Proboard Core is adaptable in size, thickness, shape and density, providing maximum flexibility and durability.



- Resistant to aging and decay to consistently deliver the highest true R-value performance over time with zero thermal drift
- Holds its physical properties after extreme environmental cycle tests, further confirming what building professionals have observed in real-world applications
- High resistance to normal soil moisture
- Available in compressive strength from 10 to 25 psi

Termite Resistant

GPS is protected from insect degradation with a specially formulated insect inhibitor that's safe for humans and pets.

Note: Product sold in Canada does not contain insect inhibitor.



Fire Performance

As with all Progressive Foam products, Proboard Core is formulated with specially modified materials that are manufactured with a flame retardant (ASTM E84/UL 723).



GPS	Compression ASTM D1621	Moisture Content After Cycling (%)	% of R-value Retained
Type I	10	0.03	99.7
Type II	15	0.04	100
Type IX	25	0.04	100

Specifications and Performance

R-Value @ 75° F, nominal 1.06" thickness ASTM C518

Type

Compressive Strength PSI (kPA) ASTM D1621

Density lb/ft³ (kg/m³) [minimum] ASTM D1622

Environmental Cycling of Thermal Performance & Exposure to Moisture: ASTM C1512

Moisture Content After Cycling [%]
R-Value Retention [%]

Flexural Strength PSI (kPA) ASTM C203

Water Absorption ASTM C272

Water Vapor Permeance ASTM E96
of 1.00 in thickness, Min, perm (ng/Pa•s•m²)

Vapor Retarder Classification ASTM E97

Flame Spread ASTM E84

Smoke Development ASTM E84

Standard Thickness:

Standard Panel Sizes:

PROBOARD[®] CORE[™]

PREMIUM GPS

R-5 R-5 R-5

Type I Type II Type IX

10 15 25

0.90 1.35 1.80

0.03 0.04 0.04
99.7 100 100

25 35 50

4.0 3.0 2.0

Up to 5.0 Up to 3.5 Up to 2.5

Class III Class III Class III

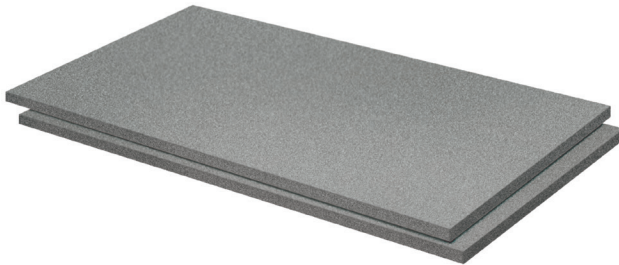
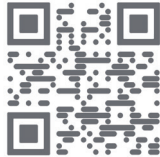
20 20 20

400 400 400

1.06," 1.6," 2.13," 3.19," 4.25"

4' x 8'

Scan for more information



About Progressive Foam Technologies

As the inventors of insulated vinyl siding and as a leading polystyrene insulation manufacturer for over 30 years, Progressive Foam Technologies has built its business by exclusively partnering with the building industry value chain. PFT works closely with siding manufacturers, building products distributors, home improvement pros, builders, and contractors of all types to bring powerful, reliable insulation solutions to North America.

For More Information:

Contact Customer Service at 800-860-3626 or
info@progressivefoam.com
www.progressivefoam.com

